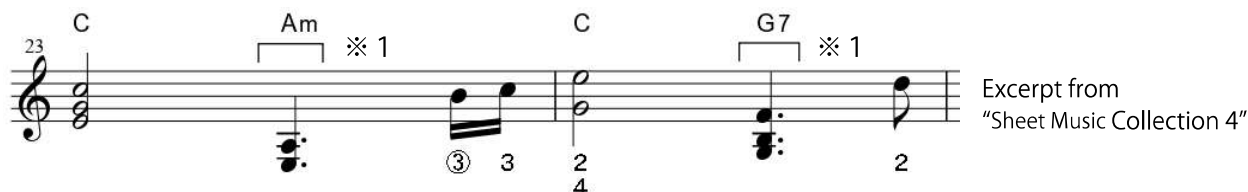


Commentary on the scores

Lyre Solo Arrange Sheet Music Collection 3 Famous Songs For Lyre
Lyre Solo Arrange Sheet Music Collection 4 Classical Music Collection For Lyres
Arranged by tonerikoneko

The symbol "※1" in the sheet music below indicates that you should play at a slightly lower volume, or
It means that you can replace it with another phrase or omit it.



As shown below, in "Sheet Music Collection 2", the "slur symbol" ※2 was used for the above meaning,
From this music collection 3 & 4, we have changed the symbol to ※1 above.



As shown below, the "slur symbol" marked ※3 in sheet music collections 3 & 4 has the original meaning of the slur symbol.
This means, "While the slur is applied, play smoothly and connect the notes so that they do not cut off."



Some classical music scores include musical symbols such as dynamics.

It's just a transcription of the original piano score, etc.

If you are playing with a lyre, please use it as a reference.

About fingering (fingering numbers) and range

As shown on the right, the finger numbers are based on the Lyre instruction book.
I add fingerings to my sheet music that are designed to help me play smoothly.
However, if the same location is repeated, it is omitted.

Fingering (fingering number)

- 1 : Right thumb
- 2 : Right index finger
- 3 : Right middle finger
- 4 : Right ring finger
- 5 : Right pinky finger
- ① : Left thumb
- ② : Left index finger
- ③ : Left Middle finger
- ④ : Left Ring finger
- ⑤ : Left Little finger

Furthermore, in this score, you can play the strings on the right hand side with your left hand, or
When playing the left-hand string with the right hand, a star (★) is added to the finger number.
However, E, B, F, and C are not marked with a ★ even though they may be played with the left hand.

The fingering used when playing a triad with the 234th finger from the top is omitted.
For triads that do not have finger numbers written on them, play them as "234 from the top."

I have written this with my fingerings in mind to make it smooth and easy to play.
Each person's hands and fingers are different sizes, and each person's lyre is also different, so
In the end, try playing with various fingerings and find one that is easier to play.

Regarding the range, it was basically created based on a 35-string soprano lyre (lowest note e (E3) to highest note d''' (D6)).
If the lyre doesn't have enough range, try raising or lowering the octave, changing or omitting chords, etc.
Please try playing it in your own way.

You can play according to the score in this music collection, or you can add your own intros and endings,
play single notes, reduce the chords from triads to dichords, etc. Rearrange it to make it easier I hope you enjoy playing it.